

## ADC39-D

## SECTORS:



## CHARACTERISTICS:

- Balanced.
- Wave spring.
- Not dependent on the rotation direction.
- Barrier fluid, purge and drain connections.

## OPERATING LIMITS:

$d_1 = 25$  to  $140$  mm    $p = 20$  kg/cm<sup>2</sup>

$v = 25$  m/s    $t = -15$  to  $+200^\circ\text{C}$  (\*)

(\*) The temperature resistance depends on the material of the secondary seals used.

The operating limits are defined by the PV factor which is determined for the sealing system characteristics and those of the application.

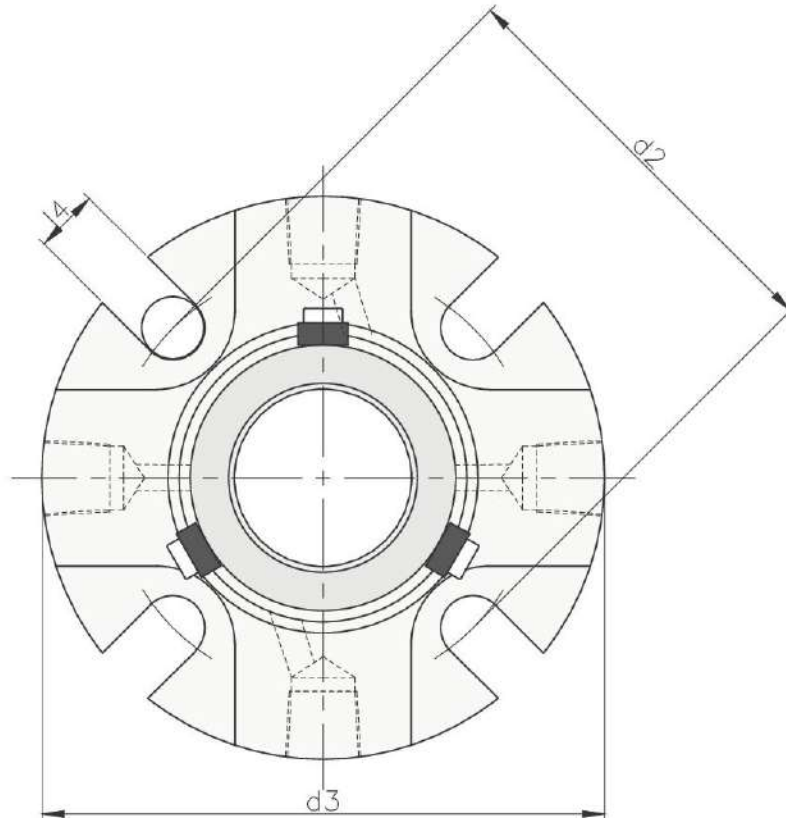
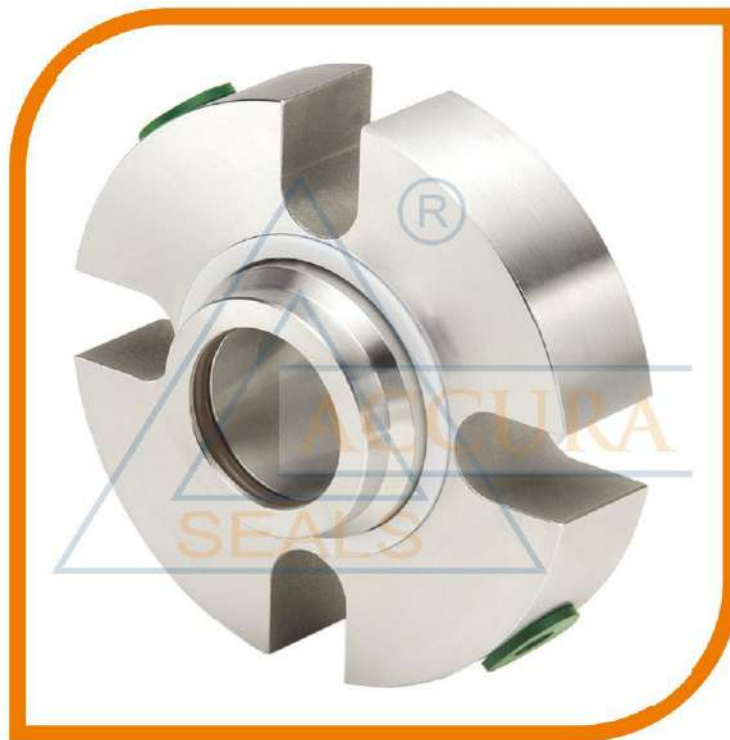
## DESCRIPTION:

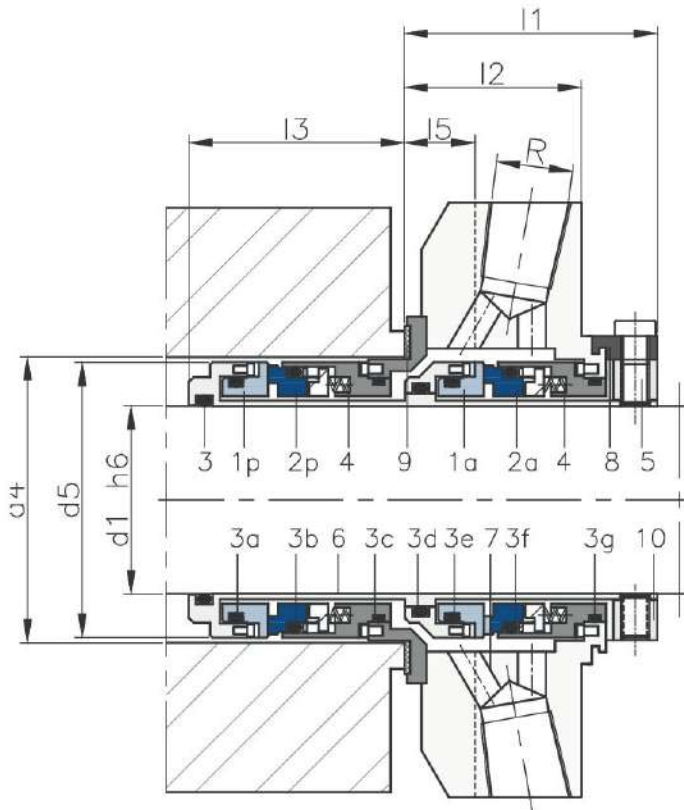
Double cartridge seal with a "tandem" arrangement suitable for working with pressurised or non-pressurised barrier fluids. Recommended in applications in which a high level of safety is required.

Possibility of incorporating a pumping ring to reduce the temperature gradient between the mechanical seal contact surfaces.

## CONNECTIONS (R):

From 25 mm to 60 mm: 1/4" NPT.  
From 63 mm to 110 mm: 3/8" NPT.





**COMPONENTS:**

- 1p Rotating contact surface product side
- 2p Stationary contact surface product side
- 1a Rotating contact surface atmospheric side
- 2a Stationary contact surface atmospheric side
- 3 O-rings
- 4 Wave spring
- 5 Set screws
- 6 Sleeve
- 7 Flange
- 8 Setting clips
- 9 Flat gasket
- 10 Drive ring

**DIMENSIONS CHART** Dimensions in mm

Shaft mm	d <sub>2</sub>	d <sub>3</sub>	d <sub>4</sub> min	d <sub>4</sub> max	d <sub>5</sub>	l <sub>1</sub>	l <sub>2</sub>	l <sub>3</sub>	l <sub>4</sub>	l <sub>5</sub>
25	71.2	101.6	41.3	48.0	39.7	49.6	34.4	44.5	13.3	13.5
28	74.5	104.8	44.5	51.2	42.9	52.4	36.7	45.4	13.3	13.5
30	79.9	108.0	46.1	56.5	44.5	52.4	36.7	45.4	13.3	13.5
32	81.6	108.0	47.6	58.3	46.0	52.4	36.7	45.4	13.3	13.5
33	84.8	111.1	50.8	61.5	49.3	52.4	36.7	45.4	13.3	13.5
35	84.8	111.1	50.8	61.5	49.3	52.4	36.7	45.4	13.3	13.5
38	91.4	123.8	57.2	68.1	55.5	54.0	37.8	47.5	13.3	15.1
40	95.7	127.0	60.3	71.4	58.7	54.0	37.8	47.5	14.3	15.1
43	98.4	133.4	63.0	74.1	61.1	54.0	37.8	47.5	14.3	15.1
45	98.4	133.4	63.0	74.1	61.1	54.0	37.8	47.5	14.3	15.1
48	98.4	133.4	66.7	74.1	64.7	54.0	37.8	47.5	14.3	15.1
50	101.6	139.7	70.0	76.6	67.9	58.7	40.7	51.9	14.3	27.0
53	113.5	148.8	73.0	85.3	71.1	58.7	40.7	51.9	17.4	15.1
55	113.5	148.8	75.0	85.3	72.9	58.7	40.7	51.9	17.4	15.1
58	116.0	165.1	76.2	88.5	74.2	58.7	40.7	51.9	17.4	15.1
60	119.9	165.1	79.4	91.7	77.4	62.6	43.6	52.8	17.4	15.9
63	127.0	171.5	85.7	98.8	83.8	65.1	43.6	50.3	17.4	15.9
65	127.0	171.5	85.7	98.8	83.8	65.1	43.6	50.3	17.4	15.9
68	131.3	171.5	92.1	103.2	90.2	63.5	41.3	53.2	17.4	15.9
70	131.3	171.5	92.1	103.2	90.2	63.5	41.3	53.2	17.4	15.9
75	145.3	196.9	101.6	113.5	98.1	65.1	45.4	51.6	20.6	17.4
80	148.5	188.9	105.0	116.8	102.2	63.8	40.5	55.3	20.6	40.5
85	154.8	206.4	111.1	123.2	107.9	65.1	40.5	54.0	20.6	40.5
90	158.6	212.7	117.5	129.5	114.3	65.1	40.5	54.0	17.5	40.5
95	172.0	222.3	120.0	132.1	117.5	65.1	40.5	54.0	17.5	40.5
100	171.7	228.6	127.0	139.7	123.8	65.1	40.5	54.0	20.6	40.5
105	174.9	228.6	130.2	142.9	127.0	65.1	40.5	54.0	20.6	40.5
110	184.4	241.3	139.7	152.4	136.5	65.1	40.5	54.0	20.6	40.5
115	184.4	241.3	146.1	152.4	136.5	65.1	40.5	54.0	20.6	40.5
120	192.4	263.5	146.1	160.4	142.9	65.1	40.5	54.0	20.6	40.5
125	254.0	304.8	171.7	184.4	155.6	77.3	44.4	62.8	20.6	44.4
130	260.4	311.2	178.1	190.8	161.9	77.3	44.4	62.8	20.6	44.4
135	266.7	322.3	190.5	203.2	168.3	77.3	44.4	62.8	20.8	44.4
140	266.7	322.3	190.5	203.2	168.3	77.3	44.4	62.8	20.8	44.4

Dimensions subject to changes or modifications.